

## 180° Outdoor Motion Detector (continued)

### Battery Replacement:

1. Make sure your tattletale base unit is disarmed
2. Remove front cover from sensor, using the screw slot lock located on the bottom of the sensor. (fig. 1)
3. Gently remove the sensor body for the back box. (fig. 2)
4. Locate and replace the CR123A battery, being careful to align the positive (+) and negative (-) ends as indicated by the markings inside the battery housing.
4. Press the black RESET button on the transmitter opposite the battery (fig.1).

(fig. 1) (transmitter)



3V CR 123A battery

Be sure to press the reset button after changing the battery



## 180° Outdoor Motion Detector



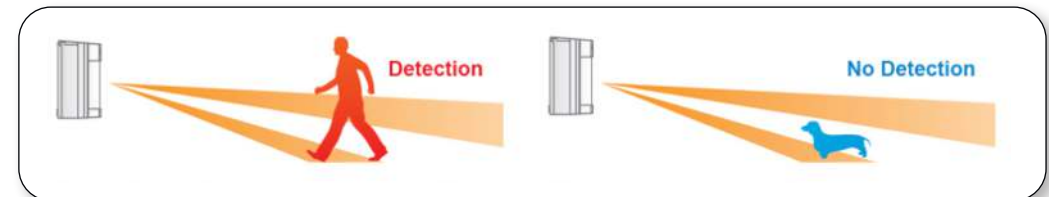
### GENERAL INFORMATION

The 180° outdoor motion sensor can be placed up to 2000 feet from the tattletale base unit. It's designed to protect the exterior of a building, property or fence. It utilizes both analog and digital technologies to detect approaching intruders before they gain access into protected areas. With its wide and comprehensive field of view and the ability to tailor its settings to meet the environment around your premise, the 180° outdoor motion sensor will provide an effective solution. It can operate normally between -4 degrees and 122 degrees and is weather resistant. The 3V CR123A Lithium battery provided will typically last for 2-3 years depending on usage.

### Features:

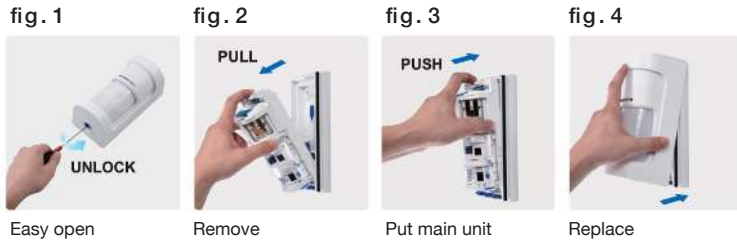
- Dual PIR Detection
- Battery Powered
- Sensitivity Adjustment Switch
- Walk Test Mode LED
- Double Conductive Shielding
- Area Defining Masking Seals
- Cover Tamper
- Quick install
- SMDA Logic (minimizes false and missed alarms)

**Digital Double Layer Detection:** Both an upper and a lower detection area must simultaneously be crossed to generate an alarm. The detections are independently analyzed so that a misleading coincidence of events can be filtered out. This technology virtually eliminates detections of smaller animals in the premises.



# 180° Outdoor Motion Detector (continued)

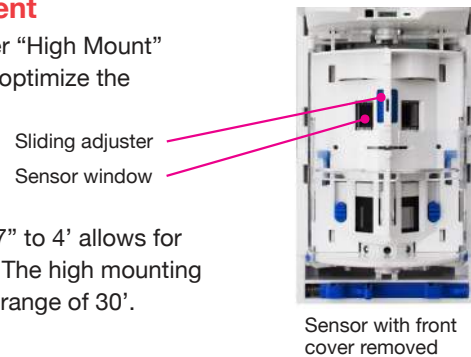
**Screw-Free Design** You can easily open and close the sensor without the removal of screws. Just follow these simple steps.



**Selectable Mounting Height** The 180° motion detector can be installed at 2'7" to 4' (low) or at 6'7" (high), avoiding vandalism or masking the of lens.

## High, low mounting adjustment

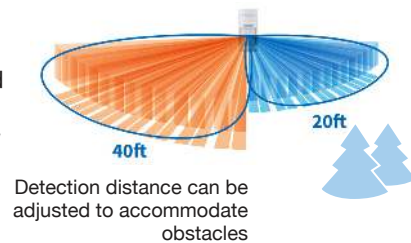
Push or pull blue slider to reveal either "High Mount" or "Low Mount" in sensor window to optimize the performance of your sensor.



**Note:** The low mounting height of 2'7" to 4' allows for the maximum detection range of 40'. The high mounting position of 6'7" has a fixed detection range of 30'.

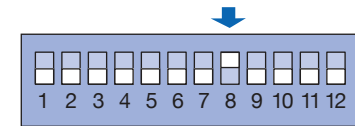
## Individual Detection Area Size

Detection distance can be easily adjusted between 2.5m (8ft) and 12m (40ft) by left and right sliding lower PIR units and DIP switch setting of MW sensitivity individually.



## DIP Switch Position

The sensor should arrive with All DIP switches in the OFF position with the exception of switch 8 that should be in the ON position. This enables the anti-masking function.



## Blue Touch™

All the components needed for the sensor's adjustment and settings are in blue making installation easy and intuitive.



## Built-in Features

### Cover Tamper

A tamper output is generated when front cover is open.

### Wide LED Window

Wide and bright LED for a recognition from a distance.

### Back Tamper

A tamper output will be generated when unit is removed from the wall.

### Level Indicator

located on the back case assures mounting accuracy

